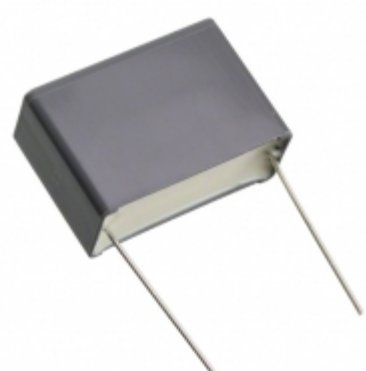


## R46KR422050P0M



**Part Number:** R46KR422050P0M  
**Manufacturer:** KEMET  
**Description:** CAP FILM 2.2UF 20% 560VDC RADIAL  
**Data sheet:** R46 Series, Miniature

**RoHS Status:** Lead free / RoHS Compliant  
**Ship From:** Hong Kong  
**Shipment Way:** DHL/Fedex/TNT/UPS/EMS

Images are for reference only.  
 See Product Specifications for product details.  
 Buy R46KR422050P0M with confidence from  
 Component-World.HK, 1 Year Warranty

[Request For Quotation](#)

### PRODUCT PARAMETER

<b>Part Number</b>	R46KR422050P0M	<b>Manufacturer</b>	<a href="#">KEMET</a>
<b>Description</b>	CAP FILM 2.2UF 20% 560VDC RADIAL	<b>Lead Free Status / RoHS Status</b>	Lead free / RoHS Compliant
<b>Quantity Available</b>	86471 pcs	<b>Data sheet</b>	<a href="#">R46 Series, Miniature</a>
<b>Category</b>	<a href="#">Capacitors</a>	<b>Voltage Rating - DC</b>	560V
<b>Voltage Rating - AC</b>	275V	<b>Tolerance</b>	±20%
<b>Termination</b>	PC Pins	<b>Size / Dimension</b>	1.260" L x 0.512" W (32.00mm x 13.00mm)
<b>Series</b>	R46	<b>Ratings</b>	X2
<b>Packaging</b>	Bulk	<b>Package / Case</b>	Radial
<b>Other Names</b>	399-11843	<b>Operating Temperature</b>	-40°C ~ 125°C
<b>Mounting Type</b>	Through Hole	<b>Moisture Sensitivity Level (MSL)</b>	Not Applicable
<b>Manufacturer Standard Lead Time</b>	19 Weeks	<b>Lead Spacing</b>	1.083" (27.50mm)
<b>Lead Free Status / RoHS Status</b>	Lead free / RoHS Compliant	<b>Height - Seated (Max)</b>	0.870" (22.10mm)
<b>Features</b>	-	<b>Dielectric Material</b>	Polypropylene (PP), Metallized
<b>Detailed Description</b>	2.2µF Film Capacitor 275V 560V Polypropylene (PP), Metallized Radial	<b>Capacitance</b>	2.2µF
<b>Applications</b>	EMI, RFI Suppression		

Component-World.com is a Reliable Stocking Distributor of Electronic Components. We specialize in all KEMET series electronic components. We have 86471 pieces of KEMET R46KR422050P0M in stock available now. Request a quote from electronics components distributor at Component-World.com, our sales team will contact you within 24 hours.  
 RFQ Email: info@Components-World.com

### RELATED PRODUCTS

	<b>Part#:</b> <a href="#">R46KR422050M2K</a> <b>Description:</b> CAP FILM 2.2UF 10% 560VDC RADIAL	<b>Manufacturers:</b> <a href="#">KEMET</a>	<a href="#">RFQ</a>
	<b>Part#:</b> <a href="#">R46KR422000P0M</a> <b>Description:</b> CAP FILM 2.2UF 20% 560VDC RADIAL	<b>Manufacturers:</b> <a href="#">KEMET</a>	<a href="#">RFQ</a>
	<b>Part#:</b> <a href="#">R46KR433000M2K</a> <b>Description:</b> CAP FILM 3.3UF 10% 560VDC RADIAL	<b>Manufacturers:</b> <a href="#">KEMET</a>	<a href="#">RFQ</a>
	<b>Part#:</b> <a href="#">R46KR447050M1K</a> <b>Description:</b> EMI SUPP MP X2 RAD 275VAC 4.7UF	<b>Manufacturers:</b> <a href="#">KEMET</a>	<a href="#">RFQ</a>
	<b>Part#:</b> <a href="#">R46KW422000P0K</a> <b>Description:</b> FILM, PP, RAD, EMI, 2.2UF, 275VA	<b>Manufacturers:</b> <a href="#">KEMET</a>	<a href="#">RFQ</a>
	<b>Part#:</b> <a href="#">R46KR42205001M</a> <b>Description:</b> FILM, PP, RAD, EMI, 2.2UF, 310VA	<b>Manufacturers:</b> <a href="#">KEMET</a>	<a href="#">RFQ</a>
	<b>Part#:</b> <a href="#">R46KR447000M1K</a> <b>Description:</b> FILM, PP, RAD, EMI, 4.7UF, 310VA	<b>Manufacturers:</b> <a href="#">KEMET</a>	<a href="#">RFQ</a>
	<b>Part#:</b> <a href="#">R46KR415050M1M</a> <b>Description:</b> FILM, PP, RAD, EMI, 1.5UF, 310VA	<b>Manufacturers:</b> <a href="#">KEMET</a>	<a href="#">RFQ</a>
	<b>Part#:</b> <a href="#">R46KW422000M1K</a> <b>Description:</b> FILM, PP, RAD, EMI, 2.2UF, 310VA	<b>Manufacturers:</b> <a href="#">KEMET</a>	<a href="#">RFQ</a>
	<b>Part#:</b> <a href="#">R46KR422040M2M</a> <b>Description:</b> CAP FILM 2.2UF 20% 560VDC RADIAL	<b>Manufacturers:</b> <a href="#">KEMET</a>	<a href="#">RFQ</a>
	<b>Part#:</b> <a href="#">R46KR422000M2K</a> <b>Description:</b> CAP FILM 2.2UF 10% 560VDC RADIAL	<b>Manufacturers:</b> <a href="#">KEMET</a>	<a href="#">RFQ</a>
	<b>Part#:</b> <a href="#">R46KR422000M1M</a> <b>Description:</b> CAP FILM 2.2UF 20% 560VDC RADIAL	<b>Manufacturers:</b> <a href="#">KEMET</a>	<a href="#">RFQ</a>
	<b>Part#:</b> <a href="#">R46KR422000M2M</a> <b>Description:</b> CAP FILM 2.2UF 20% 560VDC RADIAL	<b>Manufacturers:</b> <a href="#">KEMET</a>	<a href="#">RFQ</a>
	<b>Part#:</b> <a href="#">R46KR422045M2M</a> <b>Description:</b> CAP FILM 2.2UF 20% 560VDC RADIAL	<b>Manufacturers:</b> <a href="#">KEMET</a>	<a href="#">RFQ</a>
	<b>Part#:</b> <a href="#">R46KR433050M2M</a> <b>Description:</b> CAP FILM 3.3UF 20% 560VDC RADIAL	<b>Manufacturers:</b> <a href="#">KEMET</a>	<a href="#">RFQ</a>
	<b>Part#:</b> <a href="#">R46KR418000M1M</a> <b>Description:</b> CAP FILM 1.8UF 20% 560VDC RADIAL	<b>Manufacturers:</b> <a href="#">KEMET</a>	<a href="#">RFQ</a>
	<b>Part#:</b> <a href="#">R46KR433000M2M</a> <b>Description:</b> CAP FILM 3.3UF 20% 560VDC RADIAL	<b>Manufacturers:</b> <a href="#">KEMET</a>	<a href="#">RFQ</a>
	<b>Part#:</b> <a href="#">R46KR447050M2K</a> <b>Description:</b> CAP FILM 4.7UF 10% 560VDC RADIAL	<b>Manufacturers:</b> <a href="#">KEMET</a>	<a href="#">RFQ</a>
	<b>Part#:</b> <a href="#">R46KR447050P1M</a> <b>Description:</b> FILM, PP, RAD, EMI, 4.7UF, 275VA	<b>Manufacturers:</b> <a href="#">KEMET</a>	<a href="#">RFQ</a>
	<b>Part#:</b> <a href="#">R46KR433050M2K</a> <b>Description:</b> CAP FILM 3.3UF 10% 560VDC RADIAL	<b>Manufacturers:</b> <a href="#">KEMET</a>	<a href="#">RFQ</a>

### Related keywords for R46KR422050P0M

KEMET R46KR422050P0M	R46KR422050P0M distributor	R46KR422050P0M supplier	R46KR422050P0M price
R46KR422050P0M download datasheet	R46KR422050P0M datasheet	R46KR422050P0M stock	buy R46KR422050P0M
KEMET R46KR422050P0M	Kemet [MIL] R46KR422050P0M		